

# MAYO FURTHER EDUCATION & TRAINING SERVICES

2020/2021



**msletb**

Bord Oideachais agus Oiliúna  
Mhaigh Eo, Shligigh agus Liatroma  
Mayo, Sligo and Leitrim  
Education and Training Board

# WHO DOES FURTHER EDUCATION AND TRAINING (FET) SUPPORT?

## SCHOOL LEAVER:

*"I wanted the college experience but I didn't want to wait 4 years before I started earning."*



## LIFELONG LEARNER:

*"I want to keep educating myself."*



## THE EMPLOYEE:

*"I'm working but I need to upskill."*



## THE COMMUNITY:

*"It's a place to meet, to make friends, to learn and to share ideas."*



## THE RETURNER:

*"I've been out of education a long time, and now want to do something for me."*



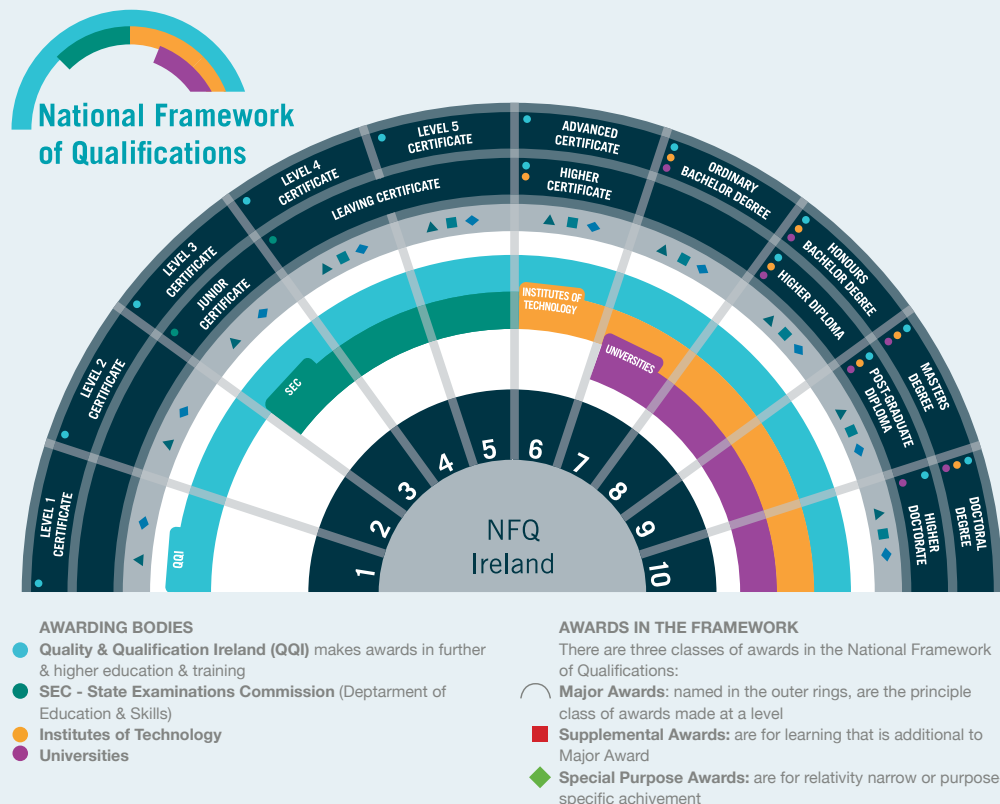
## THE EMPLOYER:

*"We needed to upskill some of our employees to respond to a changing environment."*



# CONTENTS

NATIONAL FRAMEWORK OF QUALIFICATIONS	4
WELCOME	5
MAYO ADULT EDUCATIONAL GUIDANCE & INFORMATION SERVICE	6
FULL TIME COURSES	9
PART TIME COURSES	14
OTHER SERVICES	18
FINANCIAL MATTERS	20
NARIC - RECOGNITION OF FOREIGN QUALIFICATIONS IN IRELAND	22



### QUALITY AND QUALIFICATIONS IRELAND (QQI)

QQI was established in 2012 as a new integrated agency responsible for the external quality assurance of further and higher education and training and validates programmes and makes awards for certain providers in these sectors. QQI is also responsible for the maintenance, development and review of the National Framework of Qualifications.

QQI has replaced the Further Education and Training Awards Council (FETAC) as the national awarding body for further education and training and the Higher Education and Training Awards Council (HETAC) as the national awarding body for higher education and training.

From the first certification period of 2015, the wording on certificates will be designated as follows:

- QQI Award – Further Education and Training Award (for further education and training qualifications at Levels 1 to 6 of the National Framework of Qualifications).
- QQI Award – Higher Education and Training Award (for higher education and training qualifications at Levels 6 to 10 of the National Framework of Qualifications).
- Holders of all FETAC and HETAC awards issued prior to the establishment of QQI will continue to be recognised at the appropriate levels of the National Framework of Qualifications.
- QQI is the main awarding body for courses accredited by MSLETB. As the statutory provider of further education and training in Mayo, we offer Major and Minor QQI Awards at Levels 1-6 on the National Framework of Qualifications.

## WELCOME

A very warm welcome to our Further Education and Training (FET) Directory of Services for Mayo 2020/2021. Making the decision to study with us will start you on a journey of personal discovery with the hope of improving your confidence & skills and preparing you for further study & employment.

### A LITTLE ABOUT MAYO, SLIGO AND LEITRIM EDUCATION AND TRAINING BOARD (MSLETB)

- Mayo, Sligo and Leitrim Education and Training Board (MSLETB), provides a comprehensive range of education and training services throughout the region. We are committed to providing opportunities for life and living.
- One of 16 ETBs nationally, MSLETB has the largest geographical area, covering 9014 km<sup>2</sup> across the 3 counties.
- MSLETB serves a population of 228,000 people and provides services to over 22,000 learners.
- In 2014, Training Centres in Sligo and Ballina formerly operated by FÁS/SOLAS were incorporated into MSLETB.

### HERE IN MAYO

- In 2019 we had 7,700 learners in the Mayo region engaging in a wide range of Further Education and Training full and part time courses. Our services also include 8 post primary schools across Mayo.
- We aim to provide the people of Mayo with an exciting range of education and training courses that meet the complex needs of learners and the developing needs of the county. We offer a huge range of courses from part time to full time which can lead onto further and higher education, training and employment.
- As an organisation we are very proud of our reputation for excellence, quality and learner support and of the achievements of our learners as they progress through our programmes and beyond.
- We look forward to welcoming you to one of our centres across Mayo and to support you in this exciting journey.

**Learning Together - Your Success, Our Goal**



# MAYO ADULT EDUCATIONAL GUIDANCE & INFORMATION SERVICE

## WHAT WE OFFER...

- Impartial and confidential information, advice, guidance and counselling on educational options that are available to you.
- Support by a professional Adult Educational Guidance Counsellor in identifying your unique strengths, experiences and potential.
- Support to make decisions about your future and encouraged to achieve your goals through a step by step approach.
- Research your education and training options and provide you with accurate, up-to-date and impartial information to suit your needs.
- Help you by clarifying and simplifying funding supports, entry requirements and qualification levels.
- Discover what courses and opportunities are available and suitable to you in order to make an informed choice.

This service is confidential and free to adults in the local and surrounding communities.

[www.msletbadultguidance.ie](http://www.msletbadultguidance.ie)

## INFORMATION

Lorraine Staunton

Mayo – Adult Educational Guidance Information Officer

Email: [lorrainestaunton@msletb.ie](mailto:lorrainestaunton@msletb.ie)

Tel: 094 904 1015 / 086 033 4679

## GUIDANCE

Barbara Ronayne

Castlebar – Adult Educational Guidance Co-ordinator

Email: [barbararonayne@msletb.ie](mailto:barbararonayne@msletb.ie)

Tel: 094 903 5814 / 086 279 5440

Sarah McGeough

Claremorris – Adult Educational Guidance Counsellor

Email: [sarahmcgeough@msletb.ie](mailto:sarahmcgeough@msletb.ie)

Tel: 086 852 1901

Erin Gavin

Ballina – Adult Educational Guidance Counsellor

Email: [eringavin@msletb.ie](mailto:eringavin@msletb.ie)

Tel: 086 852 1905

## ONLINE GUIDANCE AND INFORMATION RESOURCES

If you prefer to do your own research, there are a number of websites that provide up-to-date detailed information on courses provided by Mayo Sligo Leitrim Education and Training Board (MSLETB) and other education providers. Some examples include:

[www.msletb.ie](http://www.msletb.ie)

[www.fetchcourses.ie](http://www.fetchcourses.ie)

[www.ecollege.ie](http://www.ecollege.ie)

[www.qualifax.ie](http://www.qualifax.ie)

[www.careersportal.ie](http://www.careersportal.ie)

# EMPLOYER SERVICES

## SKILLS FOR WORK

Skills for Work (SFW) is a national programme aimed at providing educational training opportunities to help employees deal with the basic skill demands of the workplace.

### WHO IS IT FOR?

Employees who meet all of the following criteria:

- Are in full or part-time paid employment.
- Have no or low educational qualifications.
- Are over 18 years of age.

### EXAMPLES INCLUDE:

Personal Development - Career Planning, Preparation for ECDL, Internet Skills, Cookery - Culinary Skills, Customer Service.

### CONTACT:

Geraldine O'Haire, Employer Engagement Officer

Tel: 087 136 0694

Email: [geraldineohaire@msletb.ie](mailto:geraldineohaire@msletb.ie)

## SKILLS TO ADVANCE

Skills to Advance is a national initiative that provides upskilling and reskilling opportunities to employees or self-employed persons in entrance or lower-level jobs, and to those currently employed in vulnerable sectors. The Skills to Advance initiative supports working lives and enterprise growth in Ireland with an approach aimed at benefitting both employers and people in employment by providing free or heavily subsidised education and training opportunities.

### WHO IS IT FOR?

1. Employees/ Self Employed persons who meet one of the following criteria:
  - Have achieved no higher than a Leaving Certificate or equivalent.
  - Are over 50 years' old.
  - Are working in sectors that are vulnerable to displacement.
2. Small and medium sized enterprises and other organisations with limited capacity to identify and meet skill development needs of their employees.
3. Industry sectors with skills needs, arising from emerging opportunities or as a result of economic vulnerabilities.

### EXAMPLES INCLUDE:

Infection Prevention and Control, Training Needs Identification and Design, Project Management, Lean Green Belt.

### CONTACT:

Geraldine O'Haire, Employer Engagement Officer

Tel: 087 136 0694

Email: [geraldineohaire@msletb.ie](mailto:geraldineohaire@msletb.ie)  
[skillstoadvance@msletb.ie](mailto:skillstoadvance@msletb.ie)

Website:

[www.msletbtrainingcentres.ie/skills-to-advance-scheme](http://www.msletbtrainingcentres.ie/skills-to-advance-scheme)

# FULL TIME COURSES

## POST LEAVING CERTIFICATE COURSES (PLC)

Full-time, one to two year courses leading to NFQ Level 5 - 6 awards, which include a mixture of practical, academic and work experience.

Courses are delivered under a range of Educational Departments such as:

**Business & Administration, Healthcare Studies, IT/Computing & Design, Social Studies & Childcare, Arts & Music, Agriculture, Engineering, Sport and Construction.**

Check out [www.fetchcourses.ie](http://www.fetchcourses.ie) or the college's own websites for more detail.

Key benefits of a PLC course:

- You can achieve up to 390 CAO points upon successfully completing a Level 5 or Level 6 Major NFQ award.
- They are a step towards skilled employment or a route into Higher Education.
- Aimed at both school leavers and adult learners.
- Learning and financial supports are available.

## MSLETB PLC COLLEGES

Castlebar College of Further Education,  
Monica Sweeney (Director)

Tel: 094 902 3134

Email: [castlebarcfe@msletb.ie](mailto:castlebarcfe@msletb.ie)

Website: [www.ccfefe.ie](http://www.ccfefe.ie)

St Tiernan's College, Crossmolina,  
Michael Moyles (Co-ordinator)

Tel: 096 31236

E-mail: [tiernanscollege@msletb.ie](mailto:tiernanscollege@msletb.ie)

Website: [www.tiernanscollege.ie](http://www.tiernanscollege.ie)

Gaelcholáiste Chomáin PLC,  
Ciaran O Hora (Co-ordinator)

Tel: 097 88940

Email: [eolas@gcr.ie](mailto:eolas@gcr.ie)

Westport College of Further Education,  
Michael Murphy (Principal)

Tel: 098 25241

Email: [admin@westportcfe.ie](mailto:admin@westportcfe.ie)

Website: [www.westportcfe.ie](http://www.westportcfe.ie)

Moyné College Ballina,  
Sinead Caffrey Blaine (Course Director)

Tel: 086 045 1474

Email: [info@moynecollege.ie](mailto:info@moynecollege.ie)

Website: [www.moynecollege.ie](http://www.moynecollege.ie)

## VOCATIONAL TRAINING OPPORTUNITIES SCHEME (VTOS)

The VTOS programme consists of a range of courses designed to meet the educational and training needs of the unemployed person over the age of 21. VTOS offers the opportunity to return to full-time education while still retaining a Department of Social Protection Payment. Courses from NFQ Level 4 to Level 6.

Examples include:

**ICT, Art and Design, Business Administration, Childcare, Digital Media, Sound Production, Traditional Irish Music, Institute of Accounting Technicians and Leaving Certificate.**

Course duration 12 to 24 months.

### CONTACT:

**VTOS Coordinators:**

**Achill: Therese Ruane**

[thereseruane@msletb.ie](mailto:thereseruane@msletb.ie)

Tel: 098 47253

**Ballina: Michael McIntyre**

[michaelmcintyre@msletb.ie](mailto:michaelmcintyre@msletb.ie)

Tel: 096 71237

**Ballinrobe: Beatrice Brophy**

[beatricebrophy@msletb.ie](mailto:beatricebrophy@msletb.ie)

Tel: 094 954 2995

**Belmullet: Theresa Mc Mullin**

[theresamcmullin@msletb.ie](mailto:theresamcmullin@msletb.ie)

Tel: 097 20901

**Castlebar: Paula Donnellan**

[pauladonnellan@msletb.ie](mailto:pauladonnellan@msletb.ie)

Tel: 094 902 5582

**Swinford: Emer Mullins**

[emermullins@msletb.ie](mailto:emermullins@msletb.ie)

Tel: 094 925 192

## TRAINEESHIPS

Traineeships provide job-specific training which combines direct training and a significant workplace training element with an employer. Trainees in receipt of a training allowance will continue to receive their allowances from MSLETB for the duration of their work experience. All programmes lead to QQI Major awards at levels 4 to 6 on the NFQ. Traineeships take nine – eighteen months to complete (up to 50% of which could be in the work place).

Examples of Traineeships: **Hospitality, Engineering, Childhood Care & Education, Healthcare Support, Hairdressing and Beauty Therapy.**

### CONTACT:

**Kate McKeon**

**Recruitment Officer**

**Email:** [katemckeon@msletb.ie](mailto:katemckeon@msletb.ie)

**Tel:** 096 24017

**Web:** [www.ballinatrainningcentre.ie](http://www.ballinatrainningcentre.ie)

## APPRENTICESHIPS

**For more information go to**

[www.apprenticeship.ie](http://www.apprenticeship.ie)

**Tel: 071 9159 500**

An apprenticeship is defined as a programme of structured education and training which formally combines and alternates learning in the workplace with learning in an education or training centre. It is a dual system, a blended combination of on-the-job employer-based training and off-the-job training.

The duration of an apprenticeship can range from 2 to 4 years. Apprentices receive a payment for the entirety of the programme. There are now over 55 current apprenticeships available throughout the country and they range from NFQ levels 5 to 9.

To undergo the Apprenticeship programme individuals must first be registered by an approved employer.

Examples of Apprenticeships:

**Electrical, Auctioneering, Construction, Engineering, Hospitality, ICT, Motor, Logistics, Sales, Hairdressing.**

## YOUTHREACH

### CONTACT:

**Youthreach Coordinators:**

**Ballina,**

**Paul Large**

[paullarge@msletb.ie](mailto:paullarge@msletb.ie)

**Tel: 096 71237**

**Ballinrobe,**

**Frank Brady**

[frankbrady@msletb.ie](mailto:frankbrady@msletb.ie)

**Tel: 094 954 1117 / 087 260 5823**

The Youthreach programme is for early school leavers aged between 16 and 20 years old. Youthreach aims to develop the core skills needed for further learning and to prepare young people to progress to further education/training or to employment.

A training allowance will be paid to learners; €45 per week for those aged 16 & 17 years and €203 per week for those aged 18 years and over. Travel and meal allowances are also available.

**Kiltimagh,**

**Kathy Doherty**

[kathydoherty@msletb.ie](mailto:kathydoherty@msletb.ie)

**Tel: 094 938 1338**

## LOCAL TRAINING INITIATIVES (LTI)

MSLETB in partnership with community based groups, provide a range of person-centred, proactive training/job related services, to assist individuals enter/re-enter the active labour market.

### COURSES:

#### FAI FOOTBALL PROGRAMME:

FAI course available in Castlebar. Trainees complete the QQI Level 5 Major Award in Sport & Recreation Studies along with ITEC Gym Instructors Diploma, Pool Lifeguard and FAI Coaching Certificates up to National D level.

Graduates can earn CAO points to progress to Third Level Courses.

#### CONTACT:

Course Coordinator Leo Tierney

Tel: 087 681 6442

Email: [leotierney@msletb.ie](mailto:leotierney@msletb.ie)

Web: [www.fetchcourses.ie](http://www.fetchcourses.ie) (enter Soccer, Mayo, Castlebar)

#### PROFESSIONAL COOKERY:

A one year full time level 4 course, designed to meet the professional skills for a career in the Culinary sector. It offers students the opportunity to develop a high standard of practical culinary skills.

#### CONTACT:

Tel: 094 936 5987

Web: [www.mayoabbey.ie/training](http://www.mayoabbey.ie/training)

#### SOUTH MAYO FAMILY RESEARCH:

Level 3 Employability Skills leading to Level 4 Information & Communication Technology Skills.

#### CONTACT:

Course Coordinator Ger Delaney

Tel: 094 954 1214

Email: [gerarddelaney@msletb.ie](mailto:gerarddelaney@msletb.ie)



## SPECIALIST TRAINING PROGRAMMES (STP)

### ABILITY ENTERPRISES

Ability Enterprises is a specialised training provider based in Ballindine, Co. Mayo and has been providing education and employment skills training for over 30 years.

Courses are designed especially for those who may have difficulty with mainstream programmes due to illness/injury or disability. It offers a range of practical courses in information technology (IT) and office skills.

You will gain invaluable IT skills that can be applied to a variety of work tasks or in further education. All courses are accredited by QQI and SOLAS, with course entry throughout the year.

#### CONTACT:

Centre Manager,  
Gerard Dunne

Tel: 09493 64954 ext 104 /  
094 938 5005

email: [ability@iol.ie](mailto:ability@iol.ie)

web: [www.abilityenterprises.ie](http://www.abilityenterprises.ie)

### NATIONAL LEARNING NETWORK

The National Learning Network offers a range of FREE vocational training courses for people with extra support needs. Funded by the ETB, all courses at the National Learning Network provide the opportunity for individuals to gain the qualifications that they want in a way and at a pace that suits their needs.

The QQI accredited courses are delivered by instructors who tailor their teaching methods to the individual needs of students depending on the challenges that they face be it illness, accident, injury or disability.

Examples include: **Office Administration, Sports Recreation and Exercise, Information Processing and General Studies** to name a few.

Courses are generally one to two years in duration, are delivered all year round and lead to accreditation at Levels 1- 5 on the National Framework of Qualifications.

#### CONTACT:

Centre Manager,  
Peter Dooley

[www.nln.ie](http://www.nln.ie)

Email: [casltebar@nln.ie](mailto:casltebar@nln.ie)

Tel: 094 902 6190

# PART-TIME COURSES

## ADULT BASIC EDUCATION

The Adult Basic Education Service provides literacy and numeracy tuition in a supportive environment for adults who wish to develop their skills in reading, writing, spelling, maths and using everyday technology.

- Tuition is offered on a one-to-one or small group basis with the option of gaining a nationally recognised qualification.
- Intake is ongoing for most courses; however, some are limited to September intake only.
- Welcomes learners of all ages and backgrounds.
- Educational assessment is confidential.
- The service is free of charge.

## ENGLISH FOR SPEAKERS OF OTHER LANGUAGES (ESOL)

English Language classes for speakers of other languages, offers the opportunity to learn English from beginners to intermediate level - NFQ Level 3 up to NFQ level 5.

- Intake September and January.
- Courses are free.

## INTENSIVE TUITION IN ADULT BASIC EDUCATION (ITABE)

ITABE is a 14-week course, 6 hours per week which offers the learner the opportunity to improve their basic skills in reading, writing and numeracy intensively.

### CONTACT:

Adult Literacy Coordinators:  
(Ballina and Belmullet)  
Mary Morrissey  
Email: [marymorrissey@msletb.ie](mailto:marymorrissey@msletb.ie)  
Tel: 096 71652

(Ballyhaunis, Ballinrobe,  
Claremorris, Kiltimagh,  
Swinford)  
Noelle Staunton  
Email: [noellestaunton@msletb.ie](mailto:noellestaunton@msletb.ie)  
Tel: 094 936 2762

(Castlebar/Westport/Achill)  
Rosario Cooney  
Email: [rosariocooney@msletb.ie](mailto:rosariocooney@msletb.ie)  
Tel: 094 903 8038

## BACK TO EDUCATION INITIATIVE (BTEI)

### CONTACT:

BTEI Coordinators:  
(Ballina and Belmullet)  
Margaret Kieran  
Email: [margaretkieran@msletb.ie](mailto:margaretkieran@msletb.ie)  
Tel: 096 71652

(Ballyhaunis, Ballinrobe,  
Claremorris, Kiltimagh,  
Swinford)  
Noelle Staunton  
Email: [noellestaunton@msletb.ie](mailto:noellestaunton@msletb.ie)  
Tel: 094 936 2762

(Castlebar/Westport/Achill)  
Rosario Cooney  
Email: [rosariocooney@msletb.ie](mailto:rosariocooney@msletb.ie)  
Tel: 094 903 8038

The Back to Education Initiative (BTEI) offers part-time further education courses for those aged 16 or over. BTEI provides individuals with the opportunity to combine learning with family, work and other responsibilities. Anyone who has left full-time education can take part in a course, but priority will be given to those with less than upper second-level education. BTEI offers a range of education and training courses at NFQ Levels 3, 4, 5 and 6.

The participants eligible for free tuition are people who:

- Have less than upper-second level education.
- Are in receipt of social welfare payment.
- Have a full medical card.
- Are in the workforce with low skill levels and who need opportunities to upgrade their skills in order to advance their career.
- Those who meet the criteria for Skills to Work/Skills to Advance initiatives (further details on page 8).

Examples of courses on offer range from: **Healthcare, Childcare, Business Administration, IT, Cookery.** Fees will apply to other applicants.





## COMMUNITY EDUCATION

### WHAT IS COMMUNITY EDUCATION?

The purpose of the Community Education Service is to promote and/or develop community education initiatives in local community settings. In Community Education, learners identify their own learning needs and learn in an informal setting in their communities. Courses usually run over 6 to 8 weeks, once a week.

### HOW DO WE DO THIS?

We do this by providing grants and tuition hour funding to community groups. Funding applications are advertised in local papers each October / November.

Check local press or [www.msletb.ie](http://www.msletb.ie) and register with us for details.

### EXAMPLES OF GROUPS WE HAVE WORKED WITH:

Men's Sheds / Women's Groups / Community Development Groups / Active Retired Groups / Migrants / Refugees / Asylum Seekers / Disability Groups / Traveller Groups / Homeless Groups / LGBT Groups.

### TYPES OF COURSES ON OFFER:

Art / Craft / Photography Hair & Beauty / Cookery / Cake Decoration / Community Development & Leadership / DIY Skills / Furniture Upcycling / Gardening & Horticulture / Health & Fitness / Mindfulness / Pilates / Yoga / Personal Development / Communication Skills.

Our wish is to:

- Ensure the most excluded communities take part in community education initiatives.
- Empower and build people's capacity to participate in education initiatives.
- Empower and build the people's capacity to participate in the life of their community.
- Encourage progression for groups or individuals where this is appropriate.
- Gather information and research to feed into models of good practice and for information sharing.
- Encourage learners to understand the social and political environment in which they live.

### CONTACT:

**Máirtín Ó Móráin, Community Education Facilitator,**  
**Email:** [mairtinomorain@msletb.ie](mailto:mairtinomorain@msletb.ie)  
**Tel:** 094 904 1011  
**Mobile:** 087 602 6434

## EVENING CLASSES / HOBBY & LEISURE CLASSES

More information can be found closer to the start date on:

**Ballina:**

[www.msletbtrainingcentres.ie](http://www.msletbtrainingcentres.ie)

**Castlebar:**

[www.msletb.ie](http://www.msletb.ie)

**Westport:**

[www.westportcfe.ie](http://www.westportcfe.ie)

A number of part-time evening courses start in September and January each year. Some courses are accredited under NFQ, ITEC or other awarding bodies.

Samples classes include: **Welding, Dressmaking, German, Spanish, Accounting Technician, Graphic Design, Healthcare.**

## ONLINE COURSES

For more information go to

[www.fetchcourses.ie](http://www.fetchcourses.ie)

[www.ecollege.ie](http://www.ecollege.ie)

**Tel:** 1800 855 831

**Email:** [ecollegeinfo@solas.ie](mailto:ecollegeinfo@solas.ie)

MSLETB offer various online training programmes in areas such as Hairdressing, Healthcare and Cookery. To find out more go to the [fetchcourses](http://fetchcourses.ie) website.

eCollege is a leading learning platform that delivers online training courses in business, project management, information technology, graphic design, web design, digital marketing, software development and basic computer literacy. Courses are designed to give a flexible response to the specific skills needs of individuals who require training interventions with certification to assist them to re-enter or upskill in the labour market.

**Cost:** Free if you are in receipt of certain social welfare payments. Your local Social Welfare/Intreo office can sign you up.



# OTHER SERVICES

## MUSIC GENERATION MAYO

Ireland's National Music Education Programme transforms the lives of children and young people through access to high quality performance music education in their locality. Through partnership, we create rich and diverse ways for participants to engage in vocal and instrumental tuition delivered by skilled professional musicians, across all musical genres and styles.

**CONTACT:**  
**Laurie Barrett**  
**Music Development Officer**  
**Email:** [lauriebarrett@msletb.ie](mailto:lauriebarrett@msletb.ie)  
**Tel:** 094 904 1014  
[www.musicgenerationmayo.ie](http://www.musicgenerationmayo.ie)

# YOUTH SERVICES

The Youth Services section is primarily funded by the Department of Children and Youth Affairs (DCYA).

The main activities of the service include:

**CONTACT:**  
**Breda Ruane**  
**Youth Officer Mayo**  
**Email:** [bredaruane@msletb.ie](mailto:bredaruane@msletb.ie)  
**Tel:** 094 925 0730  
**Mob:** 087 773 8312

- Administration of Local Youth Club Grant Scheme to volunteer-led youth groups. MSLETB provides support to over a 100 voluntary youth clubs in the region, with over 5,000 young people and 1,100 volunteer leaders involved in these clubs.
- Quality assurance of youth work projects and youth groups.
- Funding to youth projects and youth groups e.g. Youth Employability Initiative, Local Youth Club Equipment Scheme, LGBTI+ Grant Scheme etc.
- Support the development of youth work and related services in the region.

# 10 REASONS

TO STUDY WITH MAYO  
SLIGO AND LEITRIM ETB'S  
FURTHER EDUCATION &  
TRAINING (FET) SERVICE



Bord Oideachais agus Oiliúna  
Mhaigh Eo, Shligigh agus Liatroma  
Mayo, Sligo and Leitrim  
Education and Training Board



**Progression to  
Employment**  
and /or Degrees Course in  
Third Level Institutions



**EARN WHILE YOU  
LEARN**

**S M A L L  
CLASS  
SIZES**



**RANGE OF  
NATIONAL &  
INTERNATIONAL  
CERTIFICATION**



[WWW.FETCHCOURSES.IE](http://WWW.FETCHCOURSES.IE)

# FINANCIAL MATTERS

## HOW CAN I AFFORD TO STUDY? WHAT HELP CAN I GET?

In many cases our full/part time courses are **FREE**...

The **Back to Education Initiative (BTEI)** courses are free for people in receipt of certain social welfare payments, have a medical card or have less than Leaving Certificate Education.

The **Adult Basic Education** courses are free of charge.

**Post Leaving Certificate (PLC)\*** courses are subject to a Government Levy of €200 but you are exempt from this if you have a medical card, are eligible for the SUSI Grant Scheme or are in receipt of the Back to Education Allowance (BTEA).

*\*There are a small number of PLC courses that may have an additional registration fee.*

**Vocational Training Opportunities Scheme (VTOS), Local Training Initiatives (LTIs), Specialist Training Programmes (STP), and Youthreach** are free to all eligible learners. In addition, these schemes allow for eligible students to continue receiving payments by way of a training allowance. Students may also be eligible for a meals and travel allowance or assistance.



## FUNDING OPTIONS FOR FULL TIME EDUCATION:

### STUDENT UNIVERSAL SUPPORT IRELAND (SUSI)

The student grant scheme is a means assessed financial support for students, particularly for those applying for PLC courses. Eligibility is dependent on the household income, residency, nationality and immigration status and education attainment. Student grants are divided into maintenance grants (support for the cost of living) and fee grants (support towards the cost of fees).

For further information visit [www.susi.ie](http://www.susi.ie)

### BACK TO EDUCATION ALLOWANCE (BTEA)

If you are unemployed, parenting alone or have a disability and are receiving certain social welfare payments you may take part in a second or third year level course and be eligible to get a Back to Education Allowance. For more information, contact your local INTREO office or <https://www.gov.ie/en/service/418e3f-back-to-education-allowance/>

### CHILDCARE

The National Childcare Scheme provides subsidies to help parents meet the cost of quality Early Learning and Care of School Age Childcare. It will replace all previous targeted childcare support programmes with a single, streamlined and user friendly Scheme.

Under the National Childcare Scheme, subsidies are available for families with children aged between 24 weeks and 15 years who are attending any participating Tusla registered childcare service, including any Tusla registered childminder and school age childcare services.

For further information on the National Childcare Scheme please visit [www.ncs.gov.ie](http://www.ncs.gov.ie) or to find childcare services in your area who are participating in the Scheme please contact Mayo County Childcare Committee on 094 906 4396

Or email [mayochildcare@mayococo.ie](mailto:mayochildcare@mayococo.ie) or [www.mayochildcare.ie](http://www.mayochildcare.ie)

### OTHER FUNDING OPTIONS

All the above information and more can be found on [www.studentfinance.ie](http://www.studentfinance.ie) This is a convenient and user-friendly source of information on financial support for further and higher education in Ireland.

## QUALIFICATIONS RECOGNITION

# RECOGNITION OF FOREIGN QUALIFICATIONS IN IRELAND

### NARIC IRELAND

NARIC Ireland provides advice on the academic recognition of foreign qualification. NARIC tries to compare a foreign qualification to an Irish qualification of a similar type and level on the Irish National Framework of Qualifications (NFQ).

#### NARIC Foreign Qualifications Database

The NARIC Ireland Foreign Qualifications database provides comparability advice and information on academic qualifications. This information will help you understand your qualification in the context of the Irish education and training system.

It can also help employers, funding agencies and education and training institutions to determine if an applicant holds the academic qualifications for a particular job, funding or course.

#### Qualification not in the Database?

If you cannot find your qualification in the database you can contact NARIC by email on [naric@qqi.ie](mailto:naric@qqi.ie) and they will do their best to help you.

**The Adult Educational Guidance and Information Service can support you through this process (contact details on page 7).**

#### Recognition of Irish Qualifications abroad

If you wish to have your Irish qualification recognised abroad, you will need to contact the following organisation(s).

[www.enic-naric.net](http://www.enic-naric.net) (for higher education and training qualifications)

You can also find useful information at <http://www.europass.ie>, an initiative which aims to help you make your skills and qualifications clearly and easily understood in Europe and further afield.

# THERE'S A COURSE NEAR YOU!

Check out [www.fetchcourses.ie](http://www.fetchcourses.ie)

**Courses are run in various locations throughout the county.**

**Contact Lorraine on 094 904 1015 or email [lorrainestaunton@msleth.ie](mailto:lorrainestaunton@msleth.ie) to find out more information.**





**Contact MSLETB on 1800 100 100**



**[www.facebook.com/msletb](http://www.facebook.com/msletb)**



**[twitter.com/msletb](https://twitter.com/msletb)**

**[www.msletb.ie](http://www.msletb.ie)**



**msletb**

Bord Oideachais agus Oiliúna  
Mhaigh Eo, Shligigh agus Liatroma  
*Mayo, Sligo and Leitrim*  
Education and Training Board